

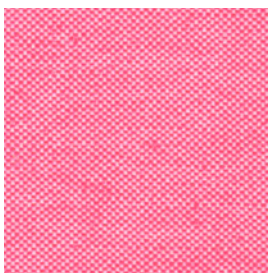
LIPSTICK SOILING⁺

For Stain Removal Assessment

These test fabrics are soiled on one side with lipstick. Each fabric is available in three versions containing different amount of soil and is useable at all washing temperatures.

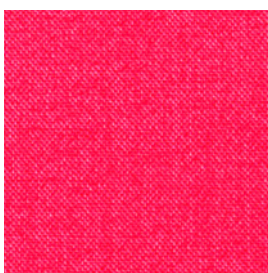
article 141/2

soiling on cotton



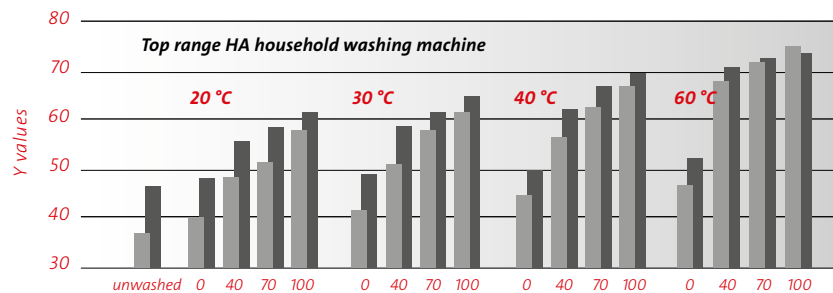
article 142/2

soiling on polyester/cotton



Article 141/142 are sensitive to the amount of detergent, to the temperature and to lipases. They are little affected by bleaching agents and insensitive to other enzymes like proteases, amylases and cellulases.

General washing behaviour



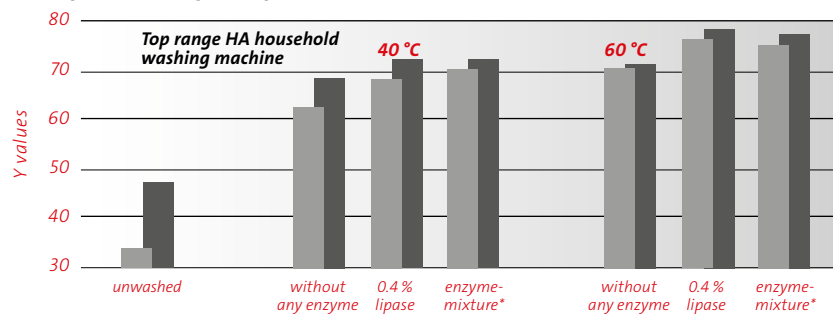
article 141/2

article 142/2

100% correspond to 6.9 g IEC A* +1.8 g sodiumperborate +0.27 g TAED/l washing liquor

% heavy duty washing powder

Influence of enzymes



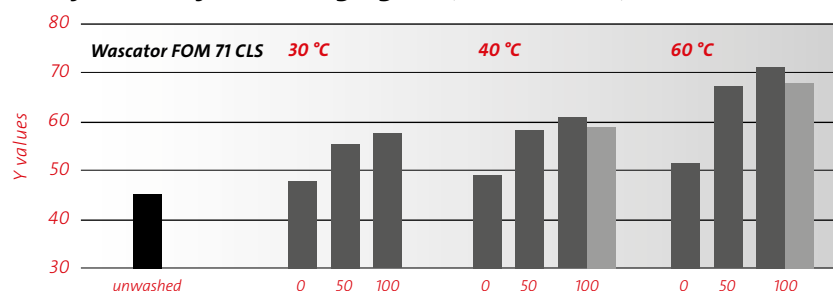
article 141/2

article 142/2

*enzyme-mixture consists of (0.4% each): protease, amylase, lipase & cellulase

Washing liquor: 6.9 g ECE*98/l

Influence of bleaching agent (EMPA 141/2)



with bleaching agent

without bleaching agent

100% correspond to 5.3 g IEC A* +1.4 g sodiumperborate +0.21 g TAED/l washing liquor

% heavy duty washing powder